

Side Table

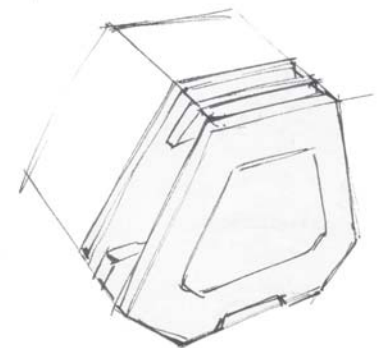
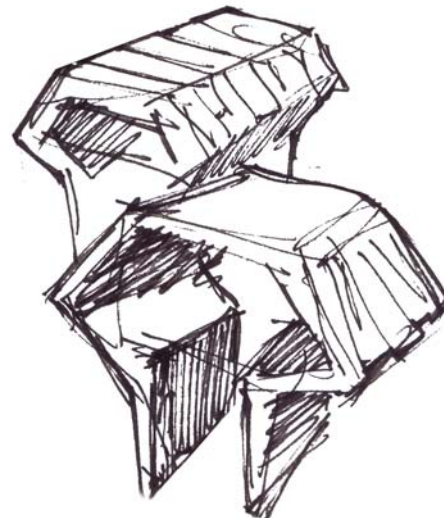
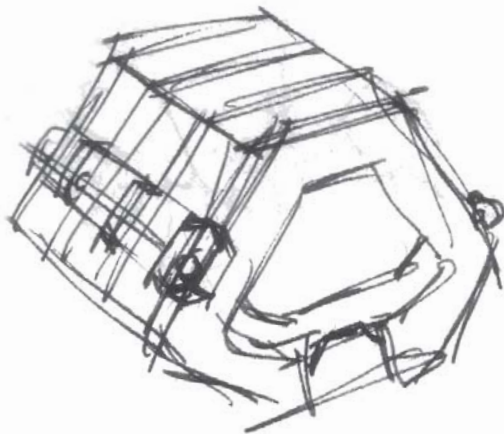
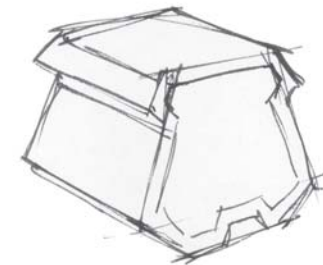
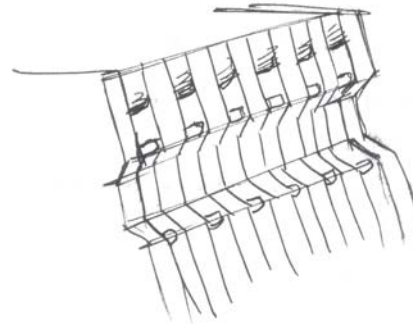
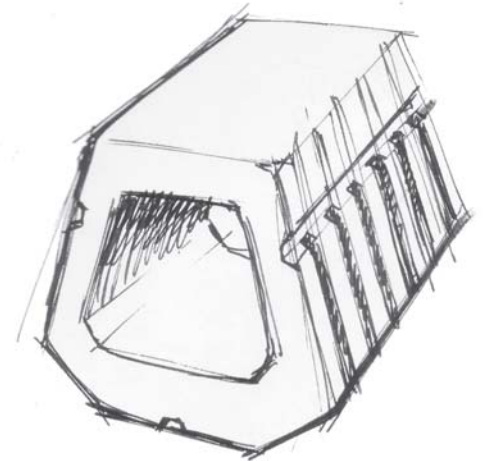
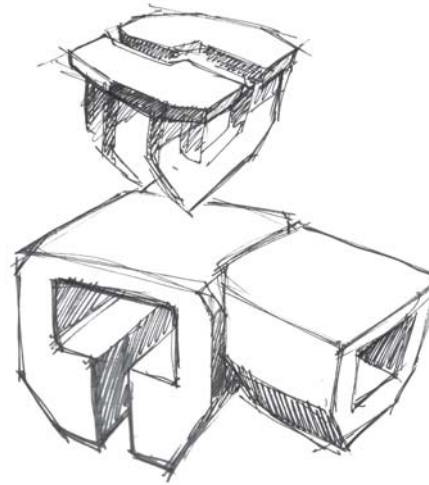
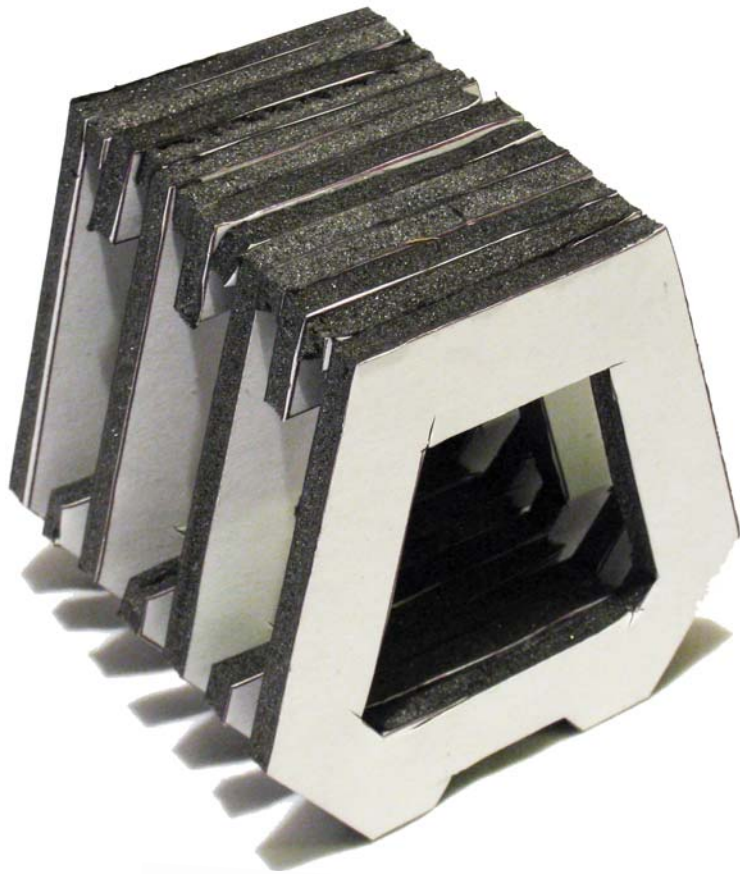
I live in a small apartment, and I am always moving furniture around to work or when I have people over. I developed this little side table for a furniture design course. I wanted something that was versatile, sturdy and light.

Summer 2008



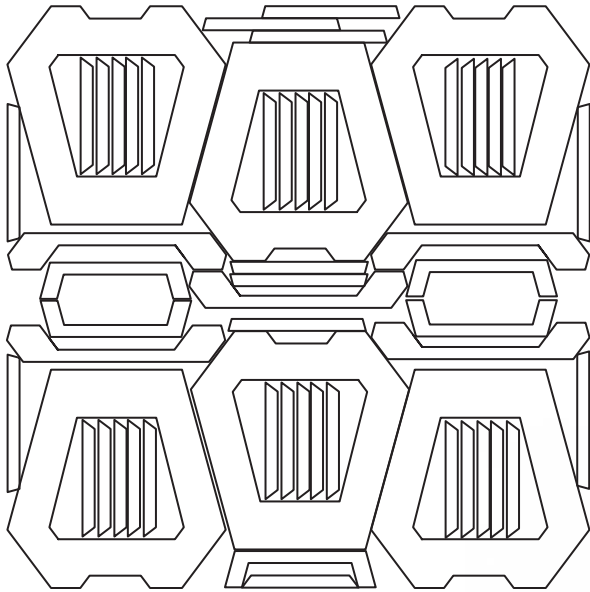
Ideation + Prototype

This project had to be designed and built in a two weeks. I did some quick sketches to get a form, and then made small foamcore prototypes to get a sense of the volume.



CAD Model

Before making any cuts I wanted to make sure I was getting the most out of the 4x4' plywood I was allowed to use. I used a cad model to optimize my cuts and used over 90% of the board.



Finished Table

The dimensions of the interior space are taken from magazines. It is also a good place for the cat to sleep. The silhouette allows the table to be tucked under the edge of the couch. The laminated birch construction is lightweight and bomb-proof.

